

These are parishes that have closed, but the dates of when they did so, is uncertain. Information that we have included is just an excerpt of history that we have found.

Bristol St. Anthony

Bristol (Day County) St. Anthony

German and Irish home-seekers from Minnesota and Wisconsin found attractive homesteads in Day County in 1865. They called their settlement Bristol. Father Henry Mensing, the resident priest at Webster, offered Mass in the homes of settlers and in 1887 encouraged the people (37 Catholic families) to erect a church. Bristol remained a mission of Webster until 1893 when it got a resident priest, Father M. S. Kane coming from Columbia.

Father Charles Sass came to Bristol in 1904. Because he was so busy with attached missions, he could give little attention to catechetical instruction so he opened a school. A rectory had been built for \$1,500 which he turned over to the Presentation Sisters for their residence. He rented a nearby dwelling to serve as the school, which he supported from his private resources. The Sisters taught in Bristol for two years (1907-09). When Father Sass left for Pennsylvania, the school closed.

St. Anthony's Church was enlarged in 1927 at a cost of \$3,000. By 1930 the little church -- built 30 years before in Harrold -- had become inadequate. Because of the tight money situation, the parish decided not to erect a conventional church building. Instead, they erected a square two-story house at a cost of \$3,500 which served a double purpose as a house of worship and a home for the priest. Father E. J. Coyne directed the improvement. (CD)



Burdette St. Michael

BURDETTE, Hand Co.

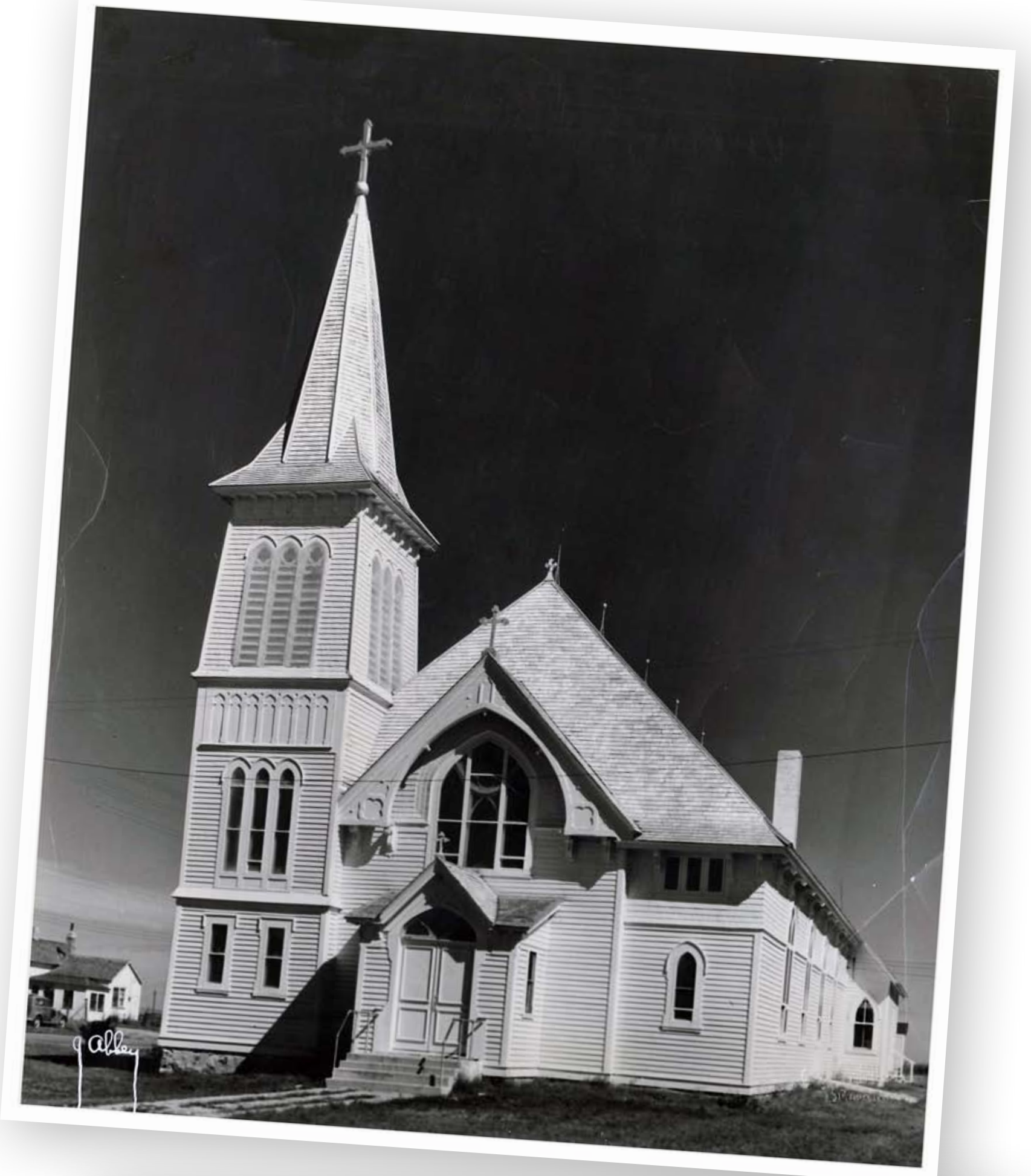
1947

8 Catholic families in the community

1909 a church was built; sold in 1960; value \$2500.

Services were held until 1956 every Sunday. the priest came from Westington, 26 miles away.

Zell St. Mary



Ellis, History of Faulk County, S.D. Zell --1909

"It is a town of about 300 inhabitants. The first settlers were from Germany and Austria, in religious faith, Catholics. While forming an enterprising, industrious community a Catholic church and school have been and now are prominent features in the makeup of the town. Among the early settlers were Leo Heppler, Wenzel Heppler, A. Schade, M. Heppler, Bustace Weis, Jos. Abris, Frank Spanbauer, Leonard Jungferdord and F J Berger. As early as the beginning of 1883, Rev. Bishop Marty began to look after the spiritual interests of this people. Rev. J Lamesch was the first resident pastor; died July 5, 1895 and was buried in the local cemetery. On the 15th of April, 1885, more than a year before the arrival of the resident priest, the people decided to have a sisters' convent which was for the time being, to serve as a church and school.

The St. Mary's Boarding School for young ladies and children, under the management of Benedictine Sisters, has been a power in the intellectual and moral uplifting of the young. The need of a larger and more modern church has been felt for some years, but not until the coming of the present parish priest, Rev. F S Meyer, in 1904, did the enterprise take tangible form.

The summer of 1904 was a time of deep interest to the good people of Zell, as the beautiful new church took on form, the interest continued until the completion and dedication of the church, which is not only an honor to the people of the town, the people who so readily furnished means and successfully carried it forward, but the entire county. In size 40x100, with a tower 78 feet high, in artistic design and finish, it is equal if not superior of any church edifice in the county.

Frederick St. Frederick

FREDERICK, Brown County

1822 Colin Campbell established a trading post on the Elm River, about 7 miles southwest of the present site of Frederick. ABERDEEN: MIDDLE BORDER CITY, p. 13.

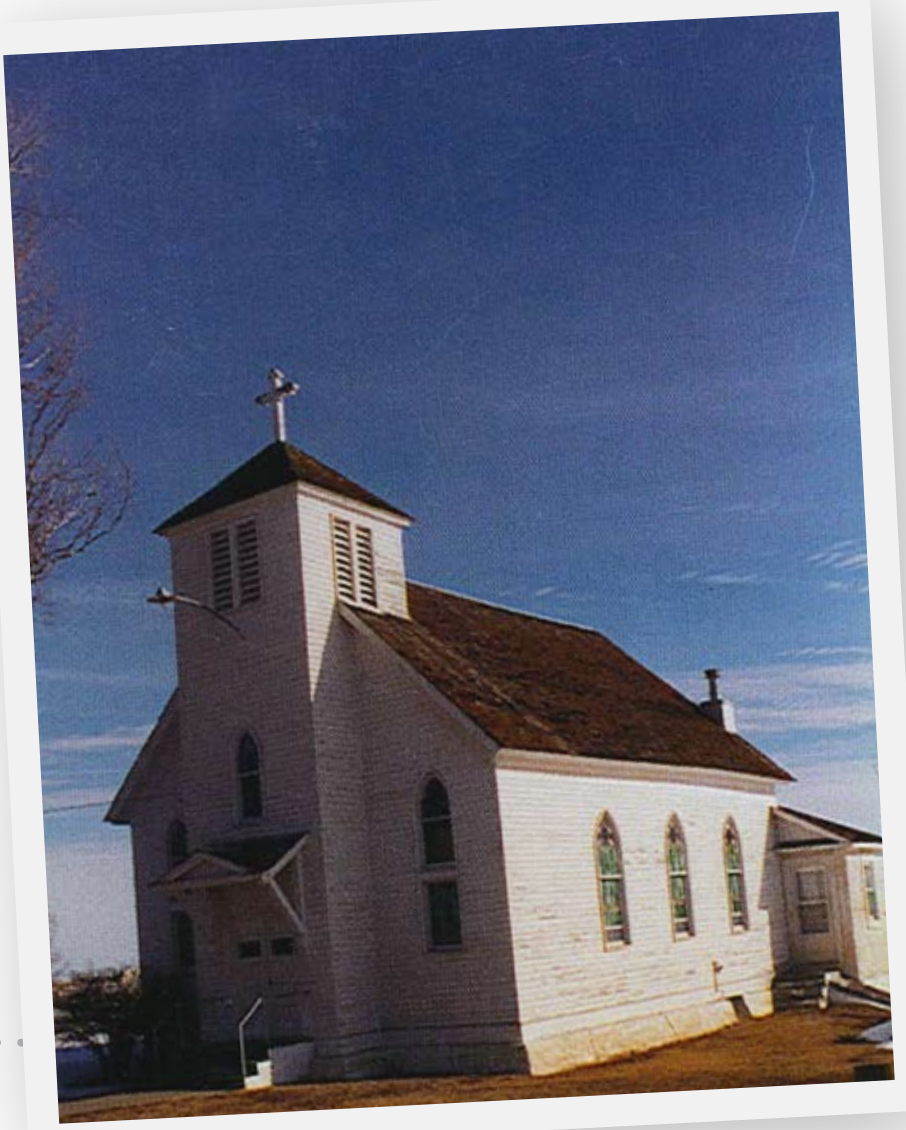
1829 Campbell abandoned his post.

1892 Frederick was a station of Aberdeen. Rev. Bernard H. Bunning; 15 Catholic families.

1910 A Catholic church at a cost of \$1,500 was erected.

1947 The church was closed. 3 Catholic families; about 25 fallen-away Catholics. Inf. by Rev. Charles Grovjahn. Catholics go to Westport or Hecla.

Athol St. Mary



Final Mass celebrated in Athol church on June 16

ATHOL — St. Mary's Catholic Church, founded more than a century ago, closed June 16. Bishop Robert Carlson and Father Joseph Short celebrated the closing Mass.

The parish, which was founded in 1895, celebrated Masses in parishioners' homes in early years of the church's history.

In 1900, the 60-member parish purchased an old store building for \$300.

Parishioners converted it into a church which served the rural Spink County community until 1917, when the present church was built.

The 27 families registered in the parish have joined parishes in Mellette, Redfield and Zell.

Pollock Immaculate Conception

POLLOCK, Campbell County

Immaculate Conception

1903-1916

Attended from Hillsview and Herreid

1906

A Catholic church was erected. Some of the settlers had come from Herreid. About 15 Catholic households.

1906-1912

Fa ther Joseph Schell made converts and secured the return of lapsed Catholics.

1916

Father Anthony Conrad ordered the Ca tholics to attend at Herreid, 15 miles away, and closed the church. Some families moved away, others were embittered and ceased to go to church.

1923

The church building was sold to a Woodmans' Lodge and, in turn, was sold to the Presbyterians who used it in their church. The interior furnishings were sold to the Catholic parish in Linton, North Dakota. Two angel statues were taken to Herreid.

Raymond St. Raymond

RAYMOND, Clark County

St. Raymond's

1879, April

Watson C. Brower, EARLY HISTORY OF CLARK COUNTY, p. 2 Michael Kelly filed a claim near the trail used by "freighters" between Watertown and the Ford on the James River. Mike Kelly and Kelly's Ranch, as the claim was called, became well known. The town of Raymond is located near the ranch.

1880's

Near Raymond, west of Clark, there was in the old days a stage stop called Halfway House, where priests as well as other travelers frequently stayed. Mass was said there, it is certain, but the dates are not known. "Dedication Booklet", Clark, S. D.

1886

A Catholic church was built in Clark. See yellow card for Catholic services Mission closed.